



54 High Street
Syston, Leicester, LE7 1GQ
£249,950



Turnkey Property Being Sold With No Upward Chain! Aston & Co are delighted to offer to the market this immaculately presented, three bedroom, spacious semi detached house located in the ever popular Syston. Set within walking distance of Syston Town Centre and all it's amenities, this bay fronted property is a must view to appreciate the space and finish on offer. Inside, the property briefly comprises; entrance hall, bay fronted lounge with log burner and a spacious full width kitchen diner to the ground floor. To the first floor are three well proportioned bedrooms and a family bathroom. The property also benefits from a spacious rear garden with outhouses, uPVC double glazing and gas central heating with HIVE.

- Immaculately Presented
- Three Bedroom Semi Detached Home
- No Upward Chain
- Character Property
- Lounge With Bay Window & Log Burner
- Modern Full Width Kitchen-Diner
- Set Within Walking Distance Of The Centre
- EPC Rating D / Council Tax Band A / Freehold



Location

Syston is located around 5 miles north of Leicester City Centre and approximately 10 miles from Loughborough. The location is convenient for local shops, supermarkets, Syston Train Station, Thurmaston Retail Park and the motorway network. Local Schools include Merton Primary School and Wreake Valley Academy.

The Property

The property is entered via a uPVC composite door leading into.

Hall

With quarry tiles, picture rail, stairs leading to the first floor and provides access to the following.

Lounge

12'10 x 11'07 (into bay) (3.91m x 3.53m (into bay))

Cosy living space aided by the log burner with brick surround and uPVC double glazed bay window with fitted shutters.

Kitchen-Diner

11 x 15'08 (3.35m x 4.78m)

Fitted with a range of floor and wall mounted units with rolltop work surface and tiled splashbacks. This refitted, modern full width kitchen also benefits from a sink and drainer unit, plumbing for a dishwasher, pantry cupboard, houses the dining table and leads into the utility and out onto the rear garden.

The First Floor Landing

With loft access to a spacious, partially boarded loft and provides access to the following.

Bedroom One

11 x 11'03 (3.35m x 3.43m)

Double bedroom with fitted robes and uPVC double glazed window to the rear aspect.

Bedroom Two

9'09 x 11'02 (into bay) (2.97m x 3.40m (into bay))

Double bedroom with uPVC double glazed bay window to the front aspect.

Bedroom Three

10'11 x 8'01 (3.33m x 2.46m)

(maximum measurements) Another good size bedroom with fitted robes and uPVC double glazed window to the front aspect.

Bathroom

7'09 x 5'06 (2.36m x 1.68m)

Fitted with a modern, three piece suite comprising bath with shower over, vanity unit with basin and wc. The bathroom also benefits from a heated towel rail, extractor fan, spotlights and an obscure uPVC double glazed window to the rear aspect.

Outhouses/Utility

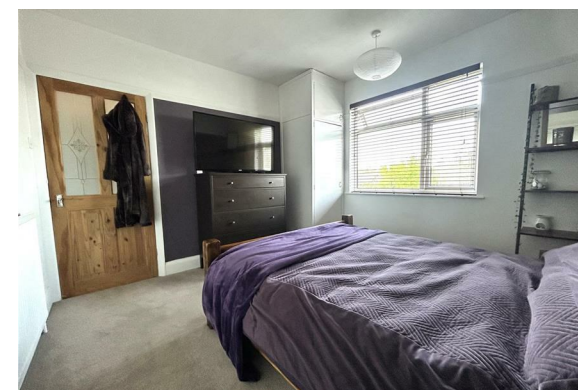
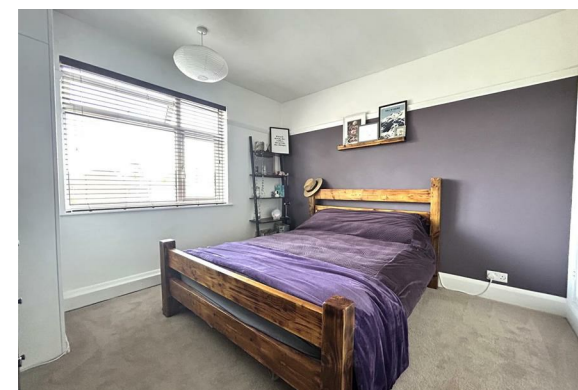
The property benefits from two outbuildings accessed via the property and garden with power and light with the second space having plumbing also and houses the washing machine and tumbledryer.

Outside

To the front of the property is a low maintenance stoned front with walled boundary and path leading to the front door.

To the side is an alley which in turn leads to the rear garden.

To the rear is a large, private rear garden with paved patio area, fenced boundaries and shed with the remainder being laid to lawn.



Floor Plan



Viewing

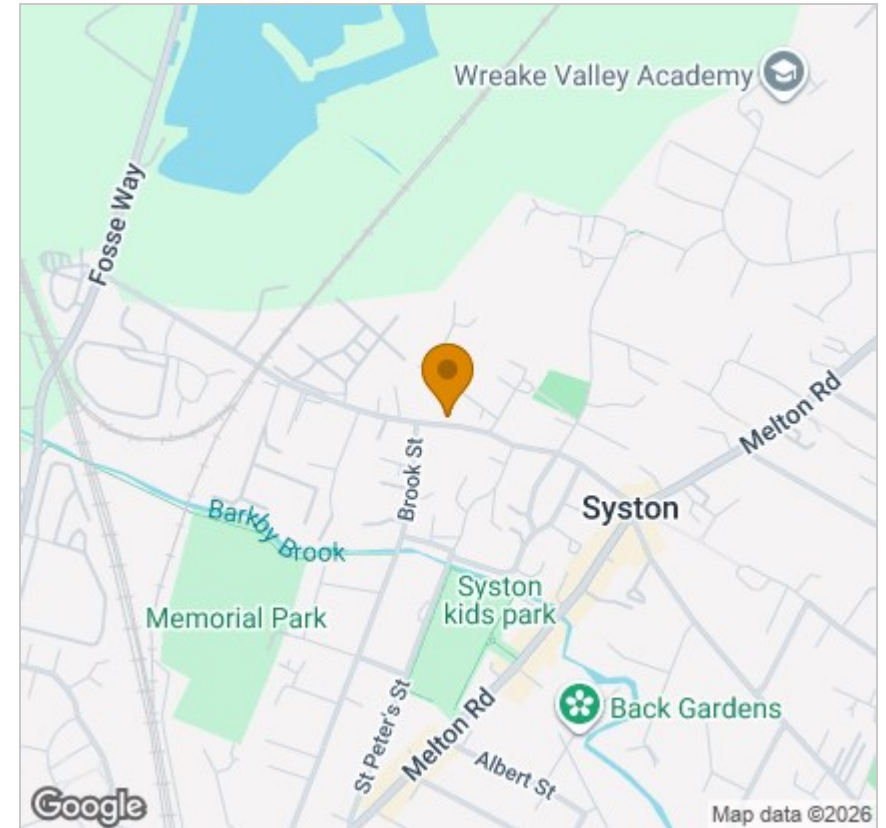
Please contact our Syston Sales Office on 0116 2607788 if you wish to arrange a viewing appointment for this property or require further information.

These particulars, whilst believed to be accurate are set out as a general outline only for guidance and do not constitute any part of an offer or contract. Intending purchasers should not rely on them as statements of representation of fact, but must satisfy themselves by inspection or otherwise as to their accuracy. No person in this firm's employment has the authority to make or give any representation or warranty in respect of the property.

4 High Street Syston, Leicester, LE7 1GP

Tel: 0116 2607788 Email: syston@astonandco.co.uk <https://astonandco.co.uk/>

Area Map



Energy Efficiency Graph

